

# Product Datasheet

## Trace tape heated floor mounted safety shower

EXP-AH-5GS

Ensure worker safety in all conditions with this trace tape heated and insulated emergency safety shower. Suitable for hazardous environments, this floor mounted model prevents water within the pipework freezing in colder climates. A constant flow rate of 76 litres per minute provides a thorough decontamination of a casualty exposed to dangerous contaminants. Meets EN and ANSI requirements.



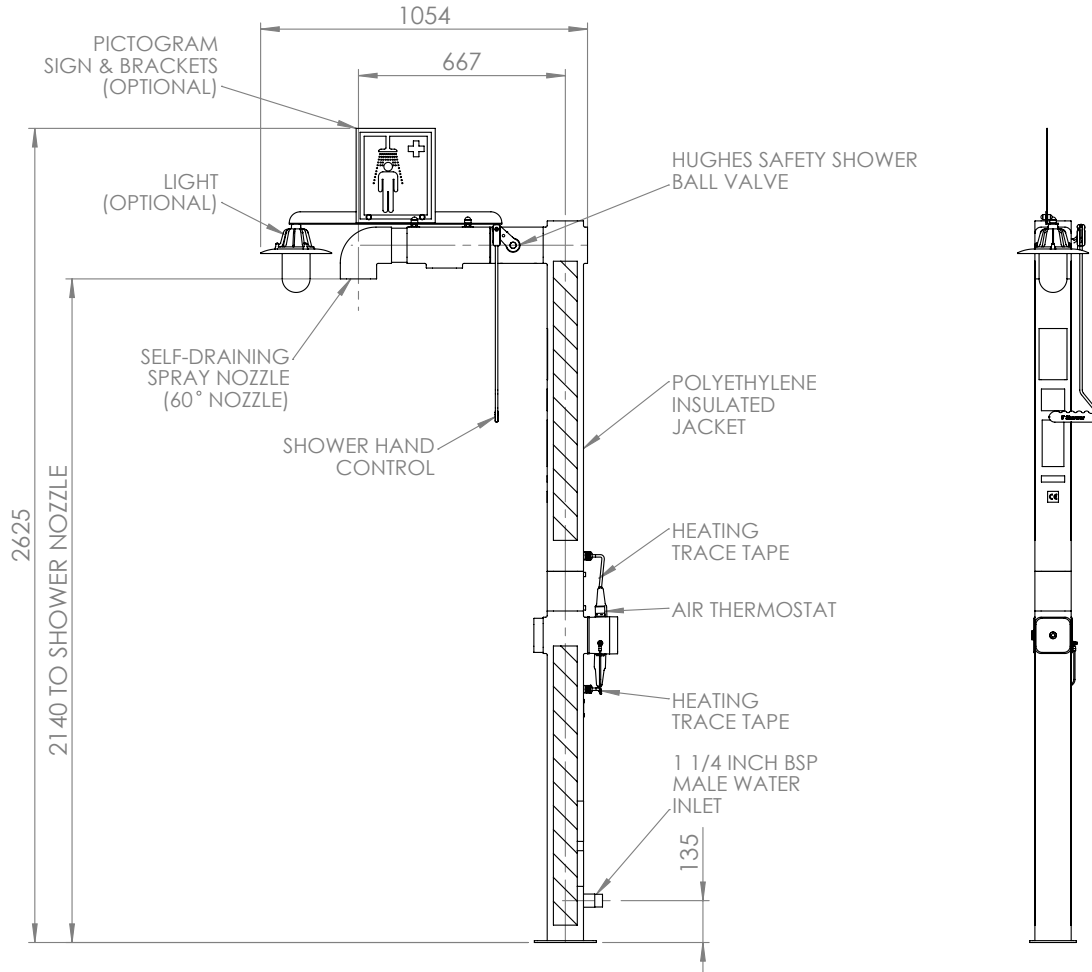
### Specifications

MATERIALS OF CONSTRUCTION	
PIPEWORK & FITTINGS	Stainless steel
OPERATING VALVE	Stainless steel, full bore, stay open ball valve
SHOWER NOZZLE	Injection moulded nylon 6
INSULATION & OUTER CASING	Polyurethane foam insulation with a medium density polyethylene impact resistant outer casing
SERVICES	
ELECTRICAL EQUIPMENT	ATEX Zone 1 & 2. Gas group IIC. Temp Class T5/6. Dust group IIIC, temp class T85/100
ELECTRICAL SUPPLY	240V, single phase, 50/60Hz (110V available)
HEATING TYPE	Trace tape heated and insulated
HEATING LOAD	42 watts
WATER INLET	1¼" male BSP
OPERATING PRESSURE	2 to 6 BAR G / 29 to 87 PSI (higher supply pressures accommodated with the incorporation of the optional pressure reducing valve)
MINIMUM FLOW RATES	Shower: 76 L per minute / 20 US gal per minute
AMBIENT OPERATING TEMPERATURE	
MINIMUM	-20C / -4F
MAXIMUM	35C / 95F
OPERATION	
SHOWER	Pull handle
DIMENSIONS & WEIGHT	
DIMENSIONS (WxDxH)	210mm (8.3in) x 890mm (35in) x 2330mm (91.7in)
WEIGHT	21kg (46lb)

# General Arrangement Drawing

## Trace tape heated floor mounted safety shower

EXP-AH-5GS



FIXING DETAIL VIEW

