

Product Datasheet

Jacketed pedestal mounted eye wash with ABS closed bowl

EXP-EJ-45GS/P

Install this pedestal mounted eye/face wash within 10 seconds reach of a potentially hazardous area. This model benefits from a medium density polyethylene impact resistant outer casing and is pre-insulated to protect the pipework from the effects of frost or direct sunlight. The acrylic capped ABS lid provides further protection to the bowl and diffusers from external contaminants. Complies to EN15154 and ANSI Z358.1-2014 standards.



Shown with optional foot treadle

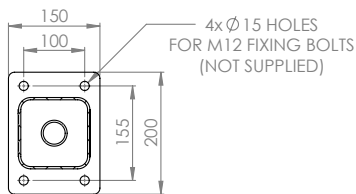
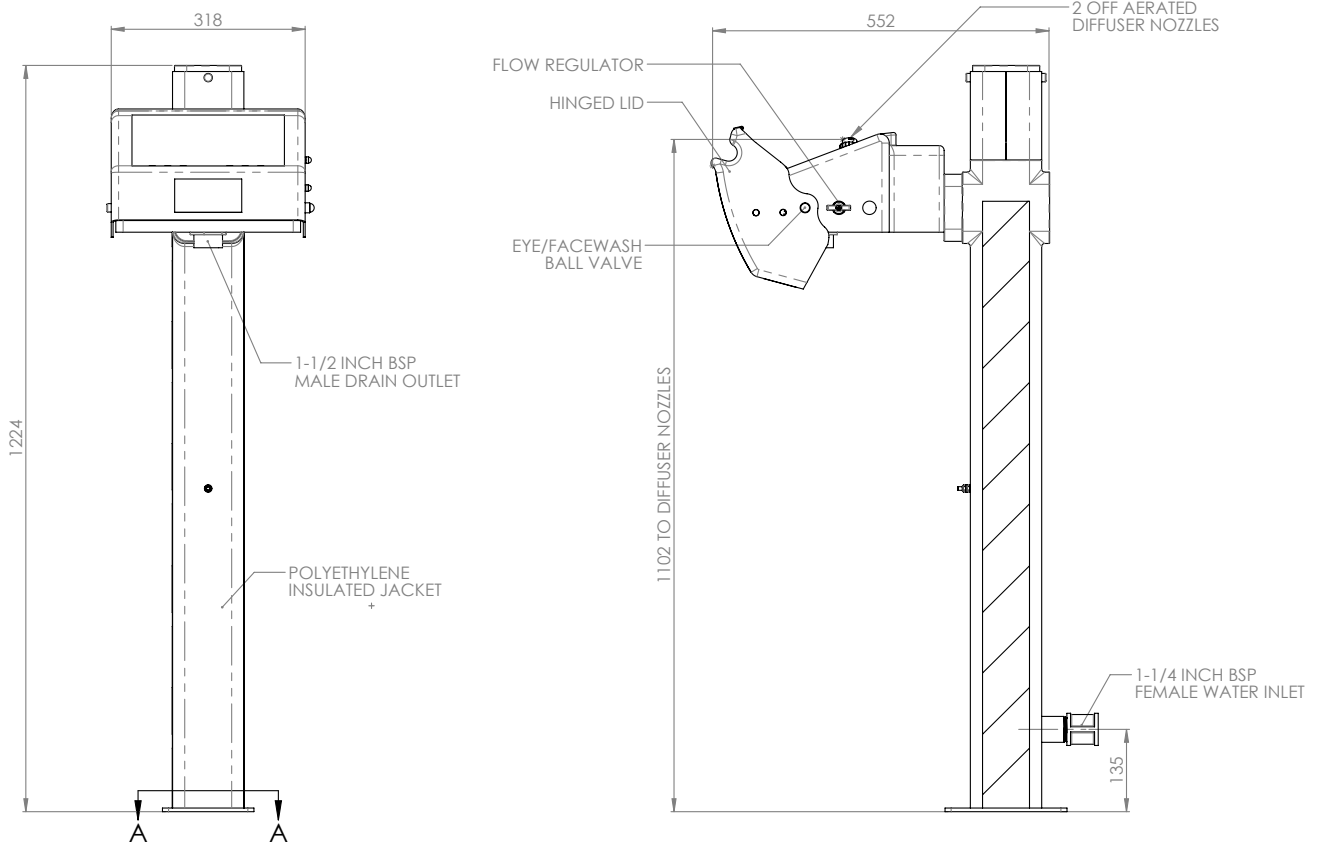
Specifications

MATERIALS OF CONSTRUCTION	
BOWL/LID	Acrylic capped ABS
DIFFUSERS	Chrome plated brass retaining ring, stainless steel filter mesh, plastic body
PIPEWORK	Stainless steel (GS) or galvanised steel (G)
INSULATION & OUTER CASING	Polyurethane foam insulation with a medium density polyethylene impact resistant outer casing
STANDARD FINISH	White with green/white safety stripes (alternative colours available)
SERVICES	
WATER INLET	1 1/4" Male BSP
OPERATING PRESSURE	2.0 to 6 BAR G / 29 to 87 PSI (higher supply pressures accommodated with the incorporation of the optional pressure reducing valve)
MINIMUM FLOW RATES	12 L per minute / 3 US gal per minute
AMBIENT OPERATING TEMPERATURE	
MINIMUM	0C / 32F
MAXIMUM	35C / 95F
OPERATION	
EYE/FACE WASH	Pull lid down
DIMENSIONS & WEIGHT	
DIMENSIONS (WxDxH)	320mm (12.6in) x 640mm (25.2in) x 1224mm (48.2in)
WEIGHT	14kg / 31lb

General Arrangement Drawing

Jacketed pedestal mounted eye wash with ABS closed bowl

EXP-EJ-45GS/P



SECTION A-A