

Product Datasheet

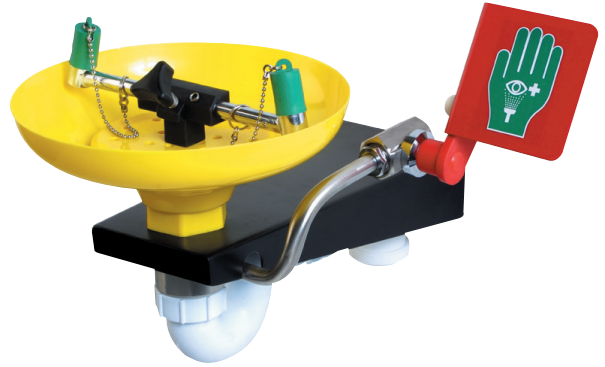
Wall mounted ASA open bowl eye wash

STD-75G

Essential for indoor locations in close proximity to potential hazards. The durable nature of the ASA bowl makes this wall mounted eye/face wash unit suitable for many industrial applications.

Twin spray nozzles are fitted with covers to prevent contamination when not in use. Operation is simple either via the standard push plate or an optional foot treadle.

Meets the requirements of EN15154 and ANSI Z358.1-2014.



Specifications

MATERIALS OF CONSTRUCTION	
BOWL	ASA
DIFFUSERS	Chrome plated brass retaining ring, stainless steel filter mesh, plastic body
STANDARD FINISH	Yellow
SERVICES	
WATER INLET	1/2" Female BSP
OPERATING PRESSURE	2.0 to 6 BAR G / 29 to 87 PSI (higher supply pressures accommodated with the incorporation of the optional pressure reducing valve)
MINIMUM FLOW RATES	12 L per minute / 3 US gal per minute
AMBIENT OPERATING TEMPERATURE	
MINIMUM	5C / 41F
MAXIMUM	35C / 95F
OPERATION	
EYE/FACE WASH	Push plate
DIMENSIONS & WEIGHT	
DIMENSIONS (WxDxH)	424mm (16.7in) x 402mm (15.8in) x 286mm (11.2in)
WEIGHT	4kg / 9lb

General Arrangement Drawing

Wall mounted ASA open bowl eye wash

STD-75G

