

# Spare Parts

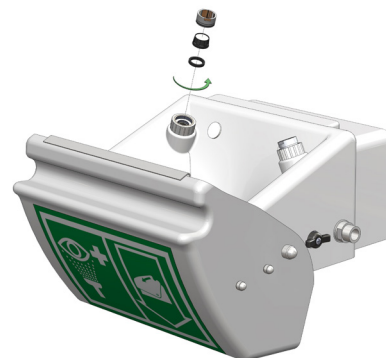
## Eye wash diffuser kit for STD-45G

Part No. 01 02 075 12984

Hughes recommend replacing eye wash diffusers every 6 months to ensure correct functionality of the unit throughout its lifetime.

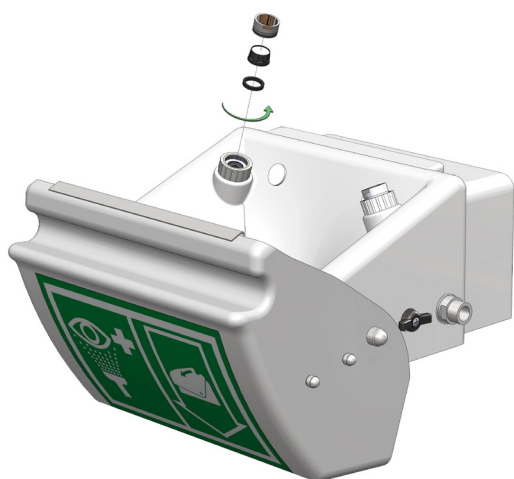
### What's included in the kit:

- x10 aerated diffusers
- Diffuser key for ease of replacement



## Specifications

MATERIALS			
EYE WASH DIFFUSERS	Rubber seal		
	Plastic diffuser body		
	Stainless steel filter		
	Chrome plated brass retaining ring		
COMPATIBLE WITH THE FOLLOWING MODELS	<i>Eyewashes:</i> STD-45G STD-45G(S)/P EXP-EJ-45G(S)/P EXP-AH-45G(S)/P	<i>Combination Showers:</i> EXP-18G(S)/45G EXP-AH-5G(S)/45G STD-TC-100KS/45G EXP-SD-18G(S)/45G EXP-20G(S)/45G EXP-33G(S)/45	<i>Cubicle Showers:</i> STD-SD-32K/45G STD-SD-31K <i>Mobile Showers:</i> STD-40K/45G STD-J-40K/45G STD-H-40K/45G



### Replacing the eye wash diffusers:

- Use the diffuser key to remove the existing diffusers in an anti-clockwise direction
- Clean any dust or debris from the area
- Fit the new diffusers using the diffuser key, taking care not to overtighten



Diffuser key