

Spare Parts

Valve Assembly - for unheated models

Part No:	1/2 inch for unheated eye or body wash	02 37 257 7347
	1 inch for unheated shower	02 37 257 7348
	1 1/4 inch for self-draining shower	02 37 257 7349



Specifications

MATERIALS (see Fig.1)

VALVE ASSEMBLY

1. Stainless steel ball valve (1/2 inch, 1 inch or 1 1/4 inch)
2. Stainless steel stop plate
3. 4 inch red nylon valve lever
4. 4 inch red nylon centre cap
5. Red nylon retaining nut with 19mm socket head

DIMENSIONS (see Fig.2)

	1/2"	1"	1 1/4"
Din (mm)	15	25	32
L	50	68	80
A	90	90	90
B	65	65	65
C	80	90	100
D	15	20	30
E	25	34	40
Weight (g)	278	505	826

Fig. 1

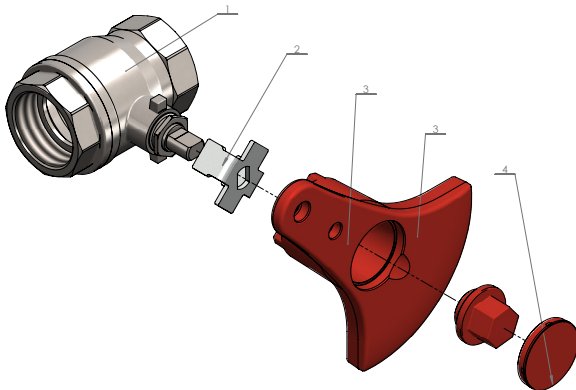


Fig. 2

