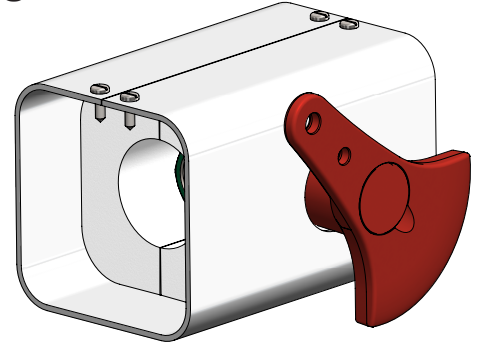


Spare Parts

Insulated Valve Assembly - for heated models

Part No:	1/2 inch eye wash valve	02 37 257 7386
	1/2 inch body wash valve	02 37 257 7387
	1 inch shower valve	02 37 257 7388



Specifications

MATERIALS (see Fig.1)

VALVE ASSEMBLY

1. White moulded polyethylene shower valve cover
2. Polystyrene insulation
3. Stainless steel ball valve
4. Stainless steel stop plate
5. 4 inch red nylon valve lever
6. Red nylon retaining nut with 19mm socket head
7. 4 inch red nylon centre cap

Fig. 1

