

Installation, Operation and Maintenance Instructions

OPTIFLEX Eye, Face and Body Showers

Warranty Information

Hughes Safety Showers Ltd guarantees the products it manufactures or sells against defects in workmanship and material for a period of one (1) year from the date of shipment or date of invoice, whichever is later. The product must be used, maintained and installed according to the instructions and procedures provided, or this warranty is void. Any alteration or modification of the product will also void this warranty. Hughes Safety Showers obligation under this warranty is limited to repair or replacement of defective products. No other warranty or remedy shall be provided. This warranty specifically does not guarantee or cover payment or reimbursement of any damages or consequential damages other than repair or replacement of the product.

Any claim under this warranty must be made in writing within twelve (12) months of the date of shipment or the date of invoice, whichever is later. The owner must prepay shipping costs of all products returned to Hughes Safety Showers Ltd under this warranty. If it is determined that the product is defective in material and /or workmanship the repair or replacement will occur, at Hughes Safety Showers option, at no charge and return freight prepaid by Hughes Safety Showers. All other return of the product to the owner shall be at the owner's expense.

Proper use by the customer is necessary for the effectiveness of the product, as well as the safety of those using the same. The user is solely responsible to determine the suitability of any Hughes Safety Showers product for any intended use. The user assumes all risk and liability for use of any Hughes Safety Showers product. User specifically acknowledges receipt of proper instructions regarding the use of the product in the original packaging and disclaims any consequential damages to person or property, damages for loss of use, lost time, loss of profit, lost income, loss of the Hughes Safety Showers product itself and/or other incidental or consequential damages other than as warranted by this limited warranty. User accepts the responsibility of removing from service any product that becomes worn out, unusable, unfit for the intended use or defective in any way such as to make the product a potential safety hazard. Hughes Safety Showers is unable to undertake such obligations or responsibilities on behalf of the user as the user is in sole possession and control of the product.

General Considerations

When planning the installation of emergency safety showers and eye/face wash equipment, the advice of a qualified first aid representative or medical advisor should be sought to establish the most suitable location and procedures for first aid and decontamination.

Installation should be in accordance with local legislation and industry standards such as EN15154 and/or ANSI Z358.1-2014 recommendations. Visit www.hughes-safety.com/standards for more information.

Location & Accessibility

- Emergency safety showers and eye/face wash equipment must be installed within 20 metres, or 10 seconds reach of, and on the same level as, a potential hazard. Where strong acids or caustics are used, equipment must be immediately adjacent to the hazard and outside of any spray paths.
- Equipment must be in a prominent position, free from any obstructions and clearly visible.
- Adequate drainage should be available in the area around and underneath the safety shower or eye/face wash. Consideration should be given to the placement of equipment in the vicinity of the safety shower that are sensitive to water or diluted chemicals, notably electrical items.
- For equipment located indoors, wastewater must be contained for subsequent safe disposal or there must be adequate drainage. Procedures must be in place for cleaning residue water after safety shower use.
- Loose objects or gravel should not obstruct the operation of the shower where walk-on foot panels or foot treadles are fitted.

Visibility

- An ISO 3864.1 compliant safety sign should be displayed on or near the safety shower or eye wash. The sign should be well positioned so it is visible to all within the hazardous area.
- The area must always be well lit with the operating mechanism remaining clearly visible.

Installation and Commissioning

Assembly and mounting

Dependent on the model ordered, the unit is suitable for either wall or table mounting. In accordance with EN 15154, the nozzles for plumbed-in eye washes should be installed at a height of (1000mm +/- 200mm) above the floor level where the user stands.

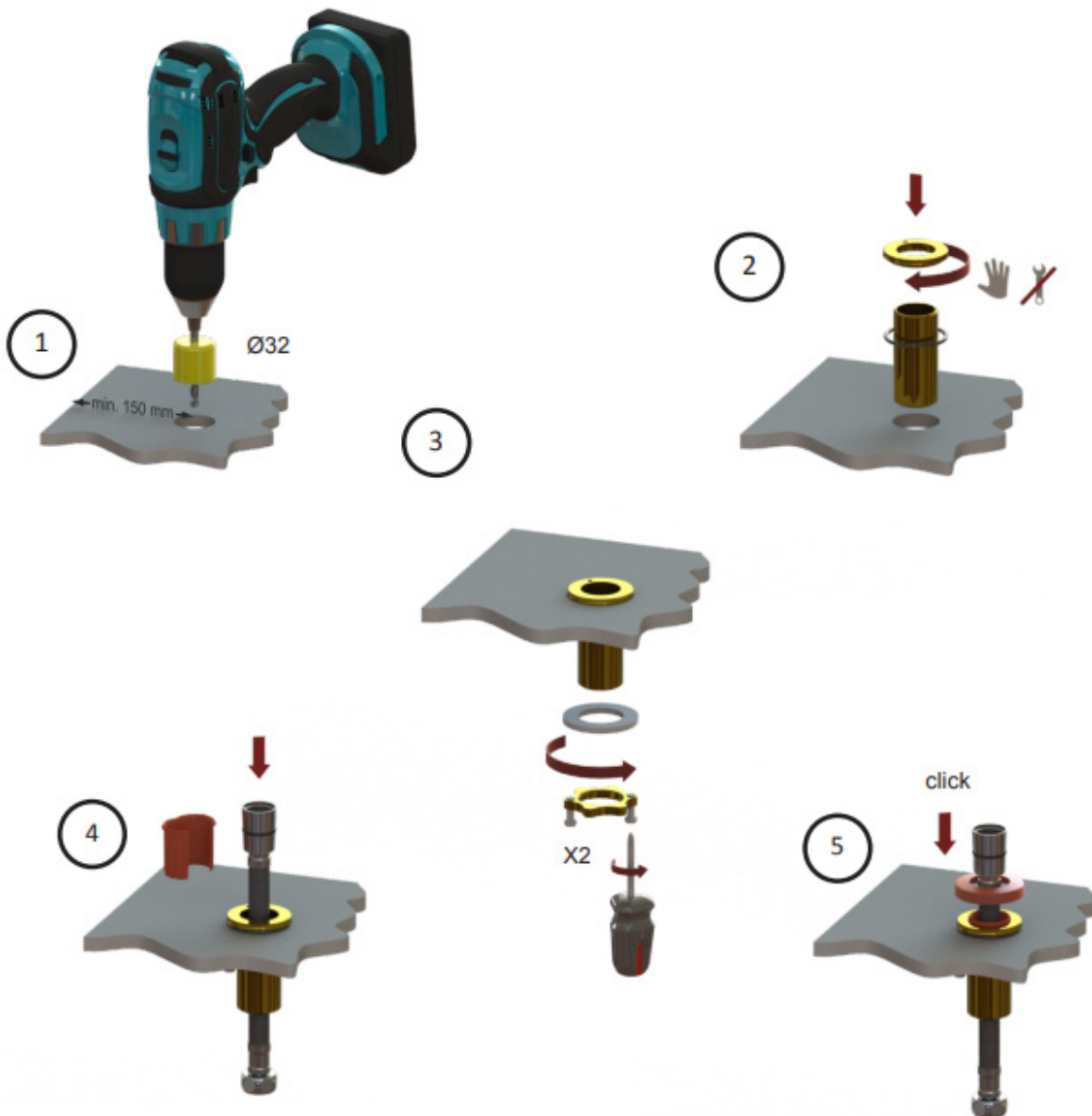
Once mounted, the stability should be tested to ensure it is safe and poses no danger to the user.

Installation of eye and eye/face washes

TABLE MOUNTING

Preferably, the hand held eyebath is to be mounted near the sink of the work bench.

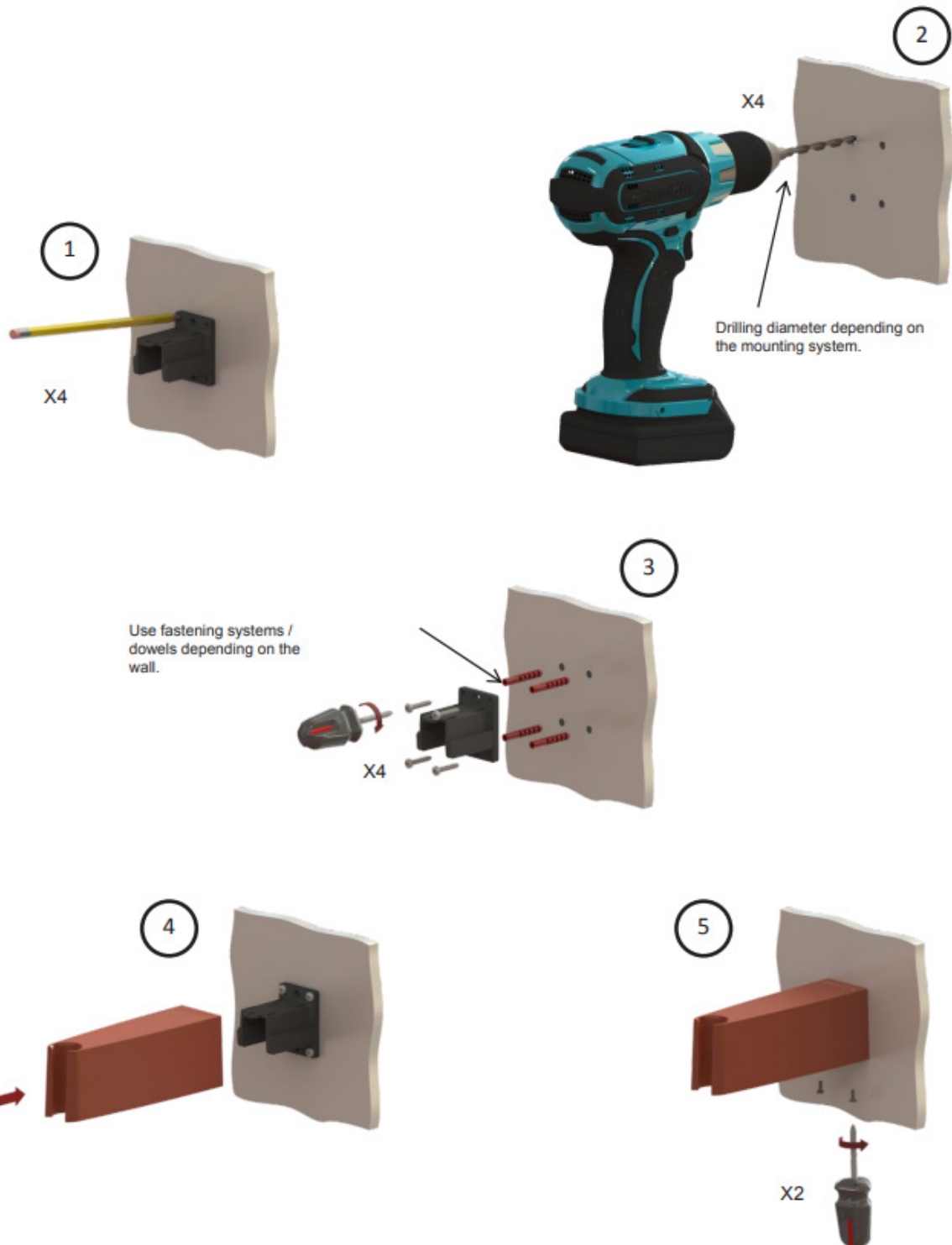
The table assembly is carried out by means of the table passage M30x1.5x65 mm. Drill a hole of $\text{Ø}32$ mm diameter into the table top at a suitable place. The installation of the bushings and the insertion of the hose are carried out according to the following sketches.



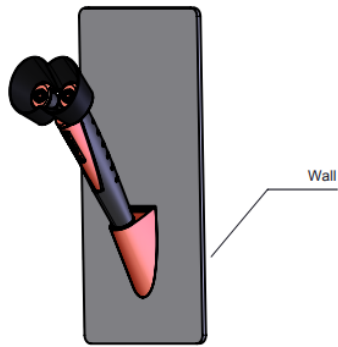
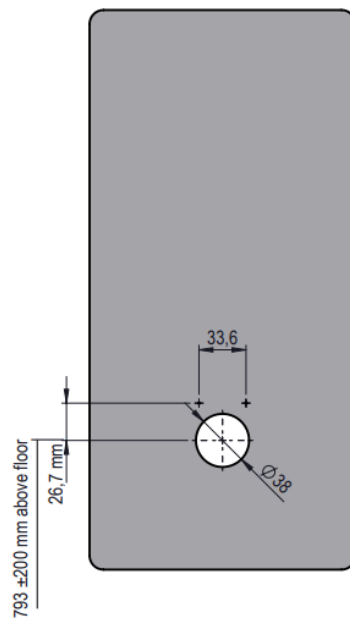
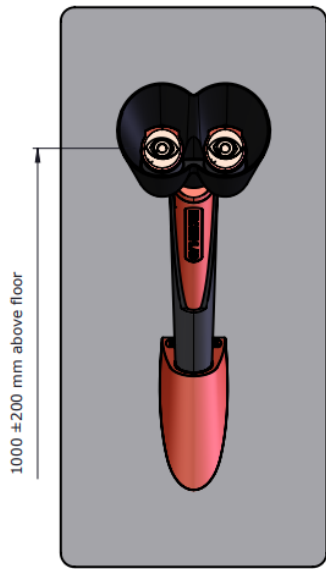
Installation of eye and eye/face washes cont.

WALL MOUNTING

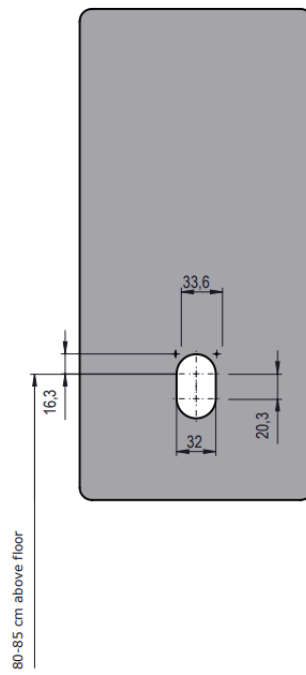
Wall mounting is carried out using a wall bracket and fitting on a suitable surface/wall. Substrate (wall) with a suitable mounting system.



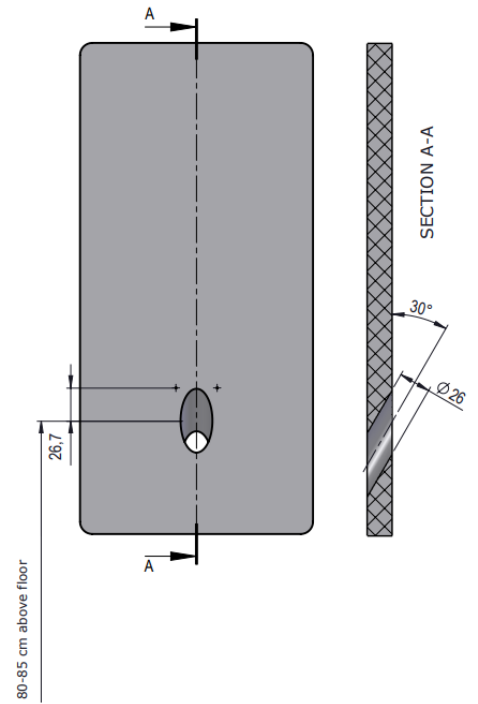
Wall thickness 6 mm or smaller



Wall thickness 6 mm or smaller



Wall thickness 15 mm





Out of Service Procedure

In the event of an emergency safety shower, eye bath or eye/face wash unit being temporarily out of service, a standard procedure should be followed.

- Place a sign on the unit indicating it is 'Out of Service'.
- Notify the relevant manager/supervisor of the area that the unit is out of service
- Prohibit or suspend any work where there is a significant hazard requiring use of the unit
- If work cannot be prohibited or suspended, a portable unit must be provided to supply the initial wash only, after which it will be necessary to move the person to a plumbed emergency safety shower, eyebath or eye/face wash unit to complete the procedure.

Note: Portable units are not acceptable as a long-term substitute for permanent locations.

A selection of our emergency safety showers are available to hire. Ensure your workforce are protected around the clock, visit www.hughes-safety.com/hire for more information.

If you require further assistance please contact us:
T: +44(0)161 430 6618
E: sales@hughes-safety.com