

# Product Datasheet

## 1500L Tank fed safety shower - jacketed & insulated EXP-J-14KS/1500

Effective in environments where a constant supply of water cannot be guaranteed. Equally, if there is insufficient water pressure or inadequate flow rates a tank fed safety shower is essential. This 1500 litre capacity model meets and exceeds EN15154 and ANSI Z358.1-2014 requirements. An optional eye/face wash is available to provide a complete solution.

For outdoor use in hot climates, the addition of a chiller unit is crucial to prevent water within the tank reaching dangerous levels and potentially scalding a casualty upon activation.

For indoor use, this jacketed and insulated model assists in maintaining a steady water temperature within the tank.



Shown with optional GRP panels and eye wash

### Specifications

MATERIALS OF CONSTRUCTION	
FRAME AND LEGS	Stainless steel
WATER TANK	1500 L (396 US gal) capacity medium density polyethylene MDPE
TANK SURROUND AND LID	GRP
PIPING AND VALVE	uPVC and stainless steel
SHOWER CONTROL VALVE	uPVC 1½" ball valve
EYE WASH CONTROL VALVE	½" stainless steel full flow ball valve
EYE WASH DIFFUSERS	uPVC
EYE WASH STRAINER	½" stainless steel
BALLCOCK VALVE	2 x ½" brass
OVERFLOW	1" male uPVC
SHOWER ROSE	Acrylonitrile styrene acrylate
PANIC BAR	Red powder coated stainless steel
FOOT CONTROL OPTIONS	GRP panel (for shower) and powder coated stainless steel treadle (for eye wash)
FASTENERS AND FIXINGS	Stainless steel
SERVICES	
WATER INLET	¾" female BSP
OPERATING PRESSURE	0.5 to 7 BAR G / 7 to 101 PSI
MINIMUM FLOW RATES	Shower: 76 L per minute / 20 US gal per minute Eye/face wash: 12 L per minute / 3 US gal per minute
AMBIENT OPERATING TEMPERATURE	
MINIMUM	0C / 32F
MAXIMUM	40C / 104F (+55C (131F) with optional chiller unit)
OPERATION	
SHOWER	Push activated panic bar or optional GRP foot panel
EYE WASH	Lift lid
DIMENSIONS & WEIGHT	
DIMENSIONS (WxDxH)	1510mm (59.4in) x 1495mm (58.9in) x 3746 (147.5in)
WEIGHT	340kg (750lb)

# HUGHES



HUGHES-SAFETY.COM

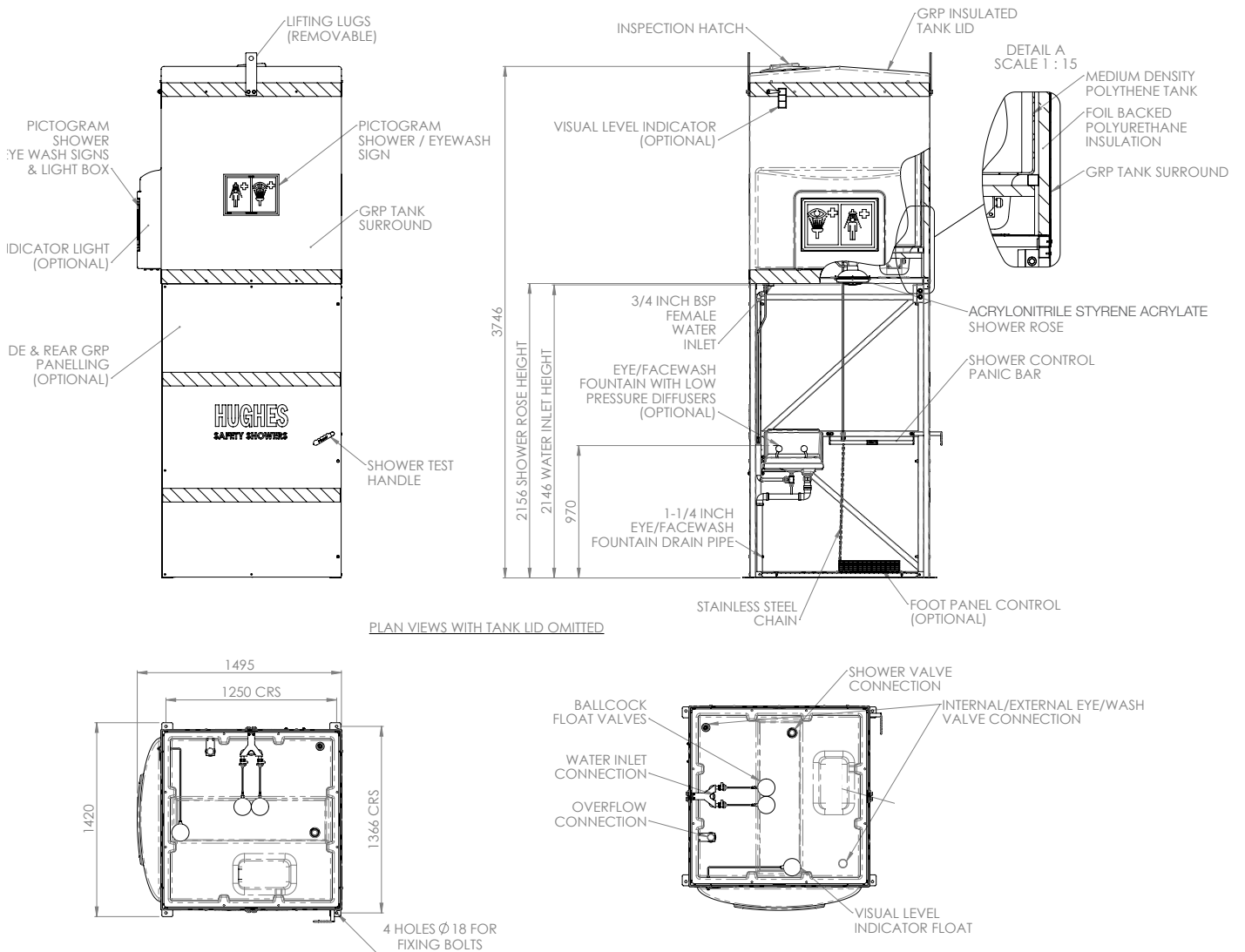
Justrite Safety Group

www.hughes-safety.com

# General Arrangement Drawing

## 1500L Tank fed safety shower - jacketed & insulated

EXP-J-14KS/1500



PLAN VIEWS WITH TANK LID OMITTED