

Product Datasheet

Quick Ship Emergency Tank Shower - 2000L (528 US Gallons)

QS2000

Packed for economical shipment and assembly on-site. Featuring a self-contained tank there is no need for a mains water supply making this the best solution for remote locations. Meets and exceeds ANSI standards by providing tepid water for over 15 minutes to the shower and Eye/Face Wash.

For outdoor use in hot climates, adding a chiller unit is crucial to prevent water within the tank from reaching dangerous levels and potentially scalding a casualty upon activation. The integral immersion heater and thick polyurethane insulation maintain a safe water temperature within the overhead tank.

Features internally mounted, covered eye/face wash unit and rectangular hollow section stainless steel frames designed and built to be earthquake-proof, conforming to the California Building Code.

Specifications

Shown as packed for shipping

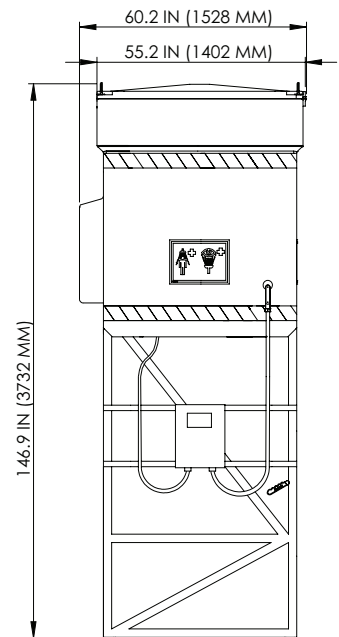
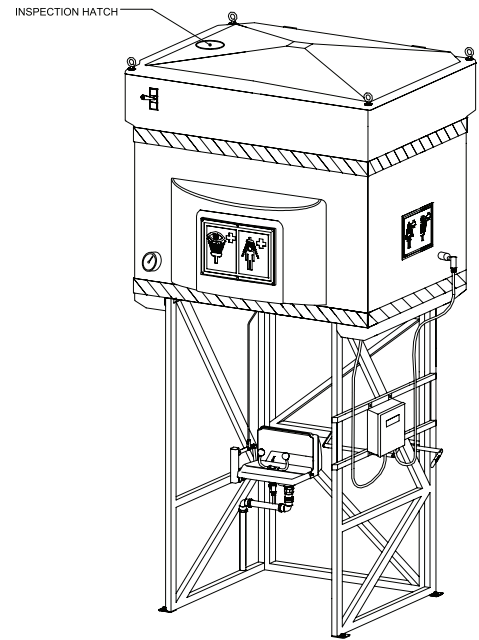
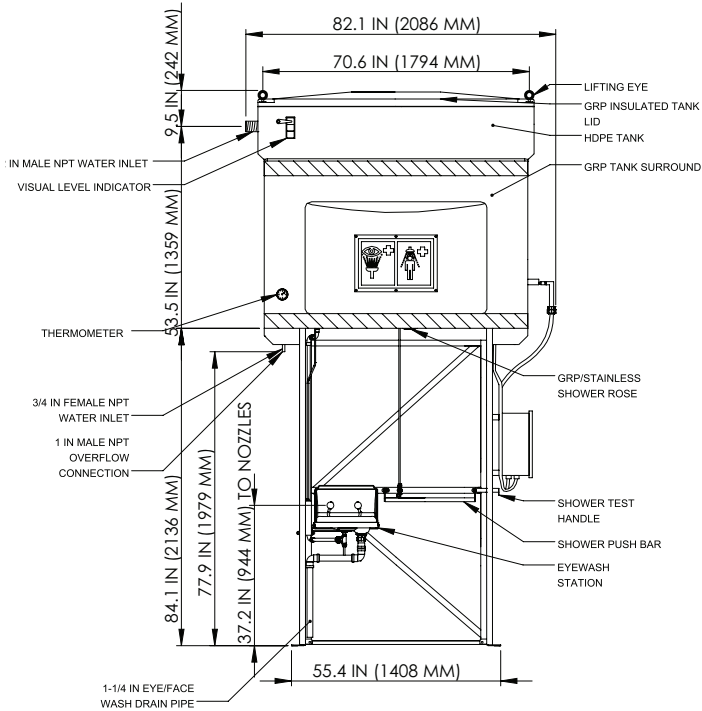


MATERIALS OF CONSTRUCTION	
SHOWER ROSE	GRP and stainless steel
PIPING & VALVE MATERIALS	uPVC and stainless steel
CONTROL VALVE - SHOWER	uPVC 1½ in ball valve
CONTROL VALVE - EYE/FACE WASH	½ in 316L stainless steel full flow ball valve
EYE/FACE WASH STRAINER	½ in stainless steel
OVERFLOW	1 in NPT uPVC
BALLCOCK VALVE	2 x ½ in NPT brass
SHOWER VALVE LEVERS	Red reinforced nylon 6
EYE/FACE WASH VALVE LEVERS	Stainless steel
WATER TANK	2000 liter (528 US gallons) capacity medium density polyethylene
TANK SURROUND AND LID	Heavy-duty GRP in white
SHOWER FRAME AND LEGS	Stainless steel
PULL RODS FOR VALVE ACTIVATION	Stainless steel
ALL FASTENERS AND FIXINGS	Stainless steel
TECHNICAL DATA	
INLET CONNECTION SIZE & TYPE	¾ in NPT Female, 2 in NPT Female
SHOWER OPERATION	Panic bar
EYE/FACE WASH OPERATION	Lift lid
SUPPLY PRESSURE	8 to 101 PSI (0.5 to 7 BAR G)
FLOW AT OPERATING PRESSURE	Shower - 76 liters/minute (20 US gallons). Eye/Face wash - 12 liters/minute (3 US gallons)
ELECTRICAL EQUIPMENT - Non-hazardous	Suitable for use in areas classified as non-hazardous
HEATING LOAD	1.7kW
ELECTRICAL SUPPLY	110V, single phase, 50/60Hz
AMBIENT OPERATING TEMPERATURE	
MINIMUM	1C / 34F
MAXIMUM	40C / 104F
DIMENSIONS & WEIGHT	
DIMENSIONS (WxDxH)	2086 mm (82.1 in) x 1528 mm (60.2 in) x 3732 mm (146.9 in)
WEIGHT	Empty: 482 kg (1062 lbs) Full 2482 kg (5472 lbs)

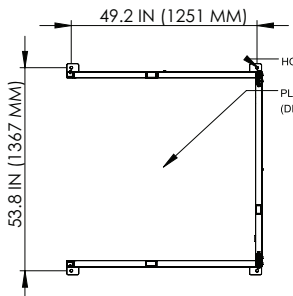
General Arrangement Drawing

Quick Ship Emergency Tank Shower - 2000L (528 US Gallons)

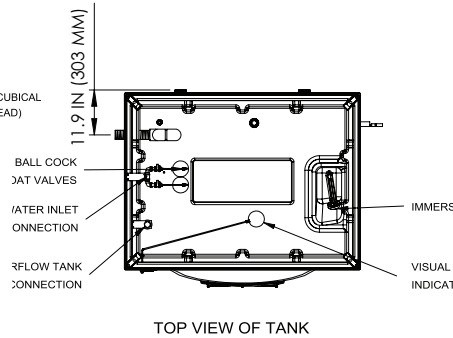
QS2000



SIDE VIEW (EYEWASH OMITTED)



PLAN VIEW DETAILING FOOTPRINT



TOP VIEW OF TANK

NOTES

DUE TO WELDING TOLERANCES, DIMENSION TOLERANCE IS +/- 0.4 IN (10 MM).

TANK VOLUME TO 70.6 FT³ (2 M³).

CENTER OF GRAVITY IS LOCATED NEAR THE CENTER OF THE CUBICLE, JUST BELOW THE CEILING.